

# KSB Shear beam load cell



## Features

### 1.Capacities

500KG ~ 10T

2. Shear beam load cell, one end fixed, diverse loading, and good seal structure
3. Self-centering, simple to install, easy to use, good interchangeability
4. Alloy steel and stainless steel

## Applications

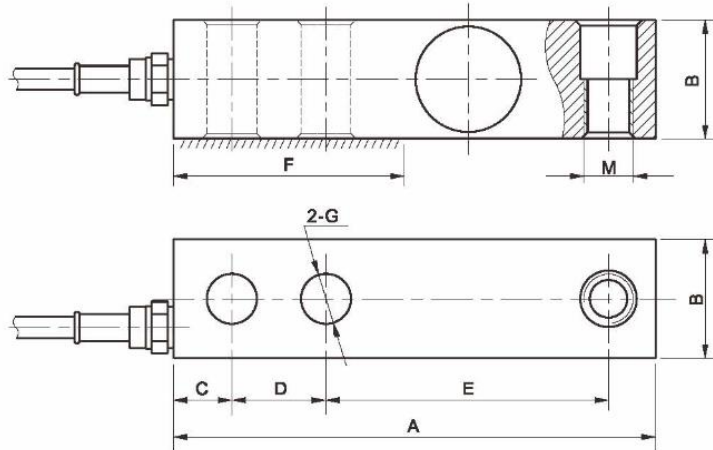
1. Suitable for various ultrathin electronic truck scale, one-track crane scale, hopper scale and etc

## Specifications

Capacity	Ton	0.05~10T
Combined Error	%FS	0.02
Creep	%FS/30min	0.02
Temperature effect on sensitivity	%FS/10℃	0.02
Temperature effect on zero	%FS/10℃	0.02
Output sensitivity		2.0±0.005 ; 3.0±0.005
Input resistance	Ω	385+/-10
Output resistance	Ω	350+/-3
Insulation resistance	MΩ	More or equivalent to 5000
Zero balance	%FS	+/-1
Temperature, Compensated	℃	-10~50
Temperature, Operating	℃	-20~60
Excitation, Recommended	V	10DC
Excitation, Max	V	12DC
Safe overload	%FS	120
Ultimate overload	%FS	150



## KSB Shear beam load cell



### Main Dimensions and Accessories

Capacity		Size mm							Thread M	
t	Klb	A	B	C	D	E	F	G	mm	inch
0.05-2	0.1-5se	130.0	32.0	15.7	25.4	76.2	57.0	13.5	M12x1.75	½-20
2.5-5	5-10	171.5	38.0	19.1	38.1	95.3	76.0	20.0	M18x1.5	¾-16
7.5-10	15-20	222.5	50.8	25.4	50.8	123.8	102.0	27.0	M24x2	1"-14

### Cable specifications:

Cable length:  $\phi 5.4 \times 6m$

Excitation + Red

Excitation - Black

Output + Green

Output - White Shield Transparent

Cable screen is not connected to load cell body

Specifications are subject to change without notice for improvement

